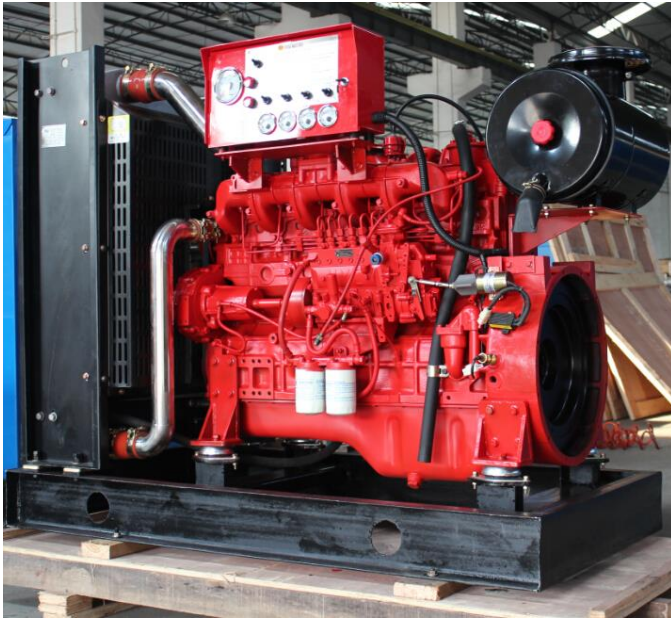


LD 6B Series**Diesel Engines for Fire Pump (Power: 125/137kw/2900rpm)**

- **Advanced Technology & Design** Origin from Germany FEV, Yuchai companies, with more compact structures, engine overhaul can meet more than 12000 hours;
- **Common Parts Supply System** Parts will share Yuchai engines parts supply system, cheap and easy to get in current market;
- **Environmentally Operation** Fuel consumption will lower 205g/kw.h, with lesser vibration, noise; best choice for small machines

| Model | 6B170Z |
|----------------------------------|---|
| Type | Vertical, in-line, water-cooled, 4-stroke |
| Intake Way | Turbocharged |
| No Cylinders, Bore x Stroke (mm) | 6-108×120 |
| Displacement (L) | 6.59 |
| Compression ratio | 17:1 |
| Rated power/speed (kW/r/min) | 125/2900 |
| Standby power/speed (kW/r/min) | 137/2900 |
| Horse power | 183 |
| Min fuel consumption g/(kW·h) | ≤205 |
| Oil capability(L) | 14~17 |
| Oil Consumption g/(kW·h) | ≤1.0 |
| Cooling fan air flow (m3/min) | 180 |
| Starting Type | Electric start |
| Noise limit dB (A) | ≤102 |
| Type of Governor | Mechanical |
| Governing Rate | ≤5% |
| Flywheel house/flywheel | 2#11.5 |
| Applicable altitude(m) | ≤2500 |
| Dimension(mm) | 2000x1000x1500 |
| Net weight (kg) | 800 |