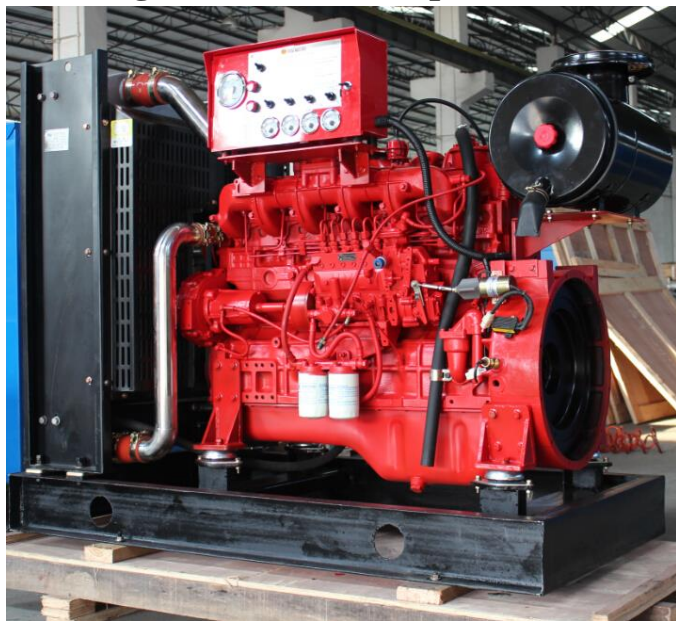


LD6B Series**Diesel Engines for Fire Pump (Power: 175kw/2900rpm)**

- **Advanced Technology & Design** Origin from Germany FEV, Yuchai companies, with more compact structures, engine overhaul can meet more than 12000 hours;
- **Common Parts Supply System** Parts will share Yuchai engines parts supply system, cheap and easy to get in current market;
- **Environmentally Operation** Fuel consumption will lower 205g/kw.h, with lesser vibration, noise; best choice for small machines

Model	6B240L
Type	Vertical, in-line, water-cooled, 4-stroke
Intake Way	Turbocharged& Inter-cooler
No Cylinders, Bore x Stroke (mm)	6-108×125
Displacement (L)	6.9
Compression ratio	17.5:1
Rated power/speed (kW/r/min)	175/2900
Standby power/speed (kW/r/min)	192/2900
Min fuel consumption g/(kW·h)	≤205
Oil capability(L)	14~17
Oil Consumption g/(kW·h)	≤1.0
Starting Type	Electric start
Noise limit dB (A)	≤102
Type of Governor	Mechanical
Governing Rate	≤5%
Flywheel house/flywheel	2#11.5
Applicable altitude(m)	≤2500
Dimension(mm)	2000×1000×1500
Net weight (kg)	800